

stream24 Webcasting KG

Bismarckstr. 5
D-91054 Erlangen
Germany

☎ Phone +49 9131 - 920 18 60
☎ Fax +49 9131 - 920 18 67
✉ Email info@stream24.com
🌐 Web www.stream24.com

Software datasheet #SIMCST
(Windows 2000 / XP / Vista)



Internet-Radio with SimpleCast
Destination server: Shoutcast / Icecast / Windows Media

Rev. 1.1 - 16.08.2008

Rev.	Author	Release	Comments/Changes
1.0	A. Bardonski 15.10.2006	S. Kelso 20.10.2006	Translation of German revision 1.1
1.1	A. Bardonski 16.08.2008	K. Werner 16.08.2008	Text changes, destination servers in one document, used version: SimpleCast v.2.5.3

1. Introduction

SimpleCast is a standalone encoder, developed by the company Special Audio Solutions (same as SAM Broadcaster).

SimpleCast serves as an interface between PC and stream server. As stream source not music files (MP3s) are used but an audio signal which is coming e.g. from a sound mixer to the line-in input of the PC soundcard.

SimpleCast supports broadcasts over Shoutcast, Icecast and Windows Media Servers. On board there are encoders for all current audio formats like MP3, mp3PRO, WMA and Ogg Vorbis.

In this tutorial we will show you step by step how to setup SimpleCast in order to connect to the stream server and broadcast a live stream.

2. Software download and installation

On the homepage of the software producer (Special Audio Solutions) you can download a free test version.

- Download SAM Broadcaster: #S2*

*The download link for this application you will find on our main page under "Help | Software".

After installation you can go over to the next page and step 3.

3. Configuration and handling

Run SimpleCast and you will get (depends on Windows display design) the following screen:

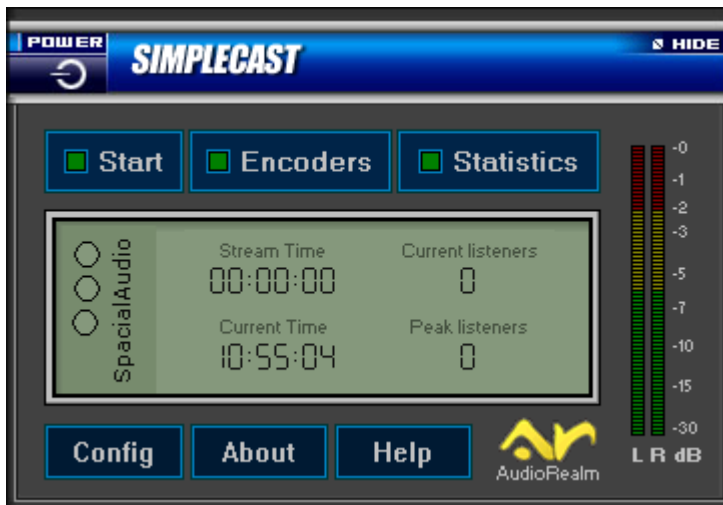


Fig. 1 SimpleCast Start

SimpleCast bases on single modules. With click on [Encoders] the following module window opens:

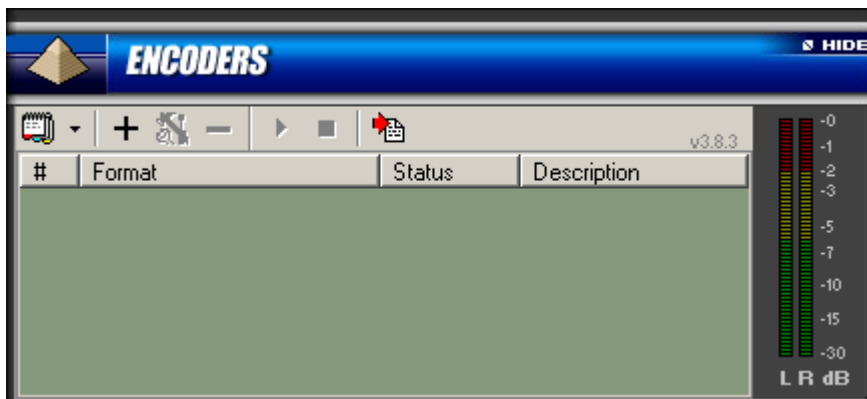


Fig. 2 SimpleCast Encoders

In the next step we will add and configure here the encoder for the live stream.

4. Encoder and Stream server settings

Into the module “Encoders” the real stream encoder is added. The encoder has the job to convert your broadcast in real time to the select format in set up bitrate and to send it further in packets to the stream server.

Please read further the chapter that corresponds to your stream server type and continue then at chapter 5 on page 13:

- 4.1 Shoutcast Server (pages 4 to 6)
- 4.2 Icecast Server (pages 7 to 9)
- 4.3 Windows Media Server (pages 10 to 12)

4.1 Shoutcast Server

4.1.1 Adding of MP3-encoder

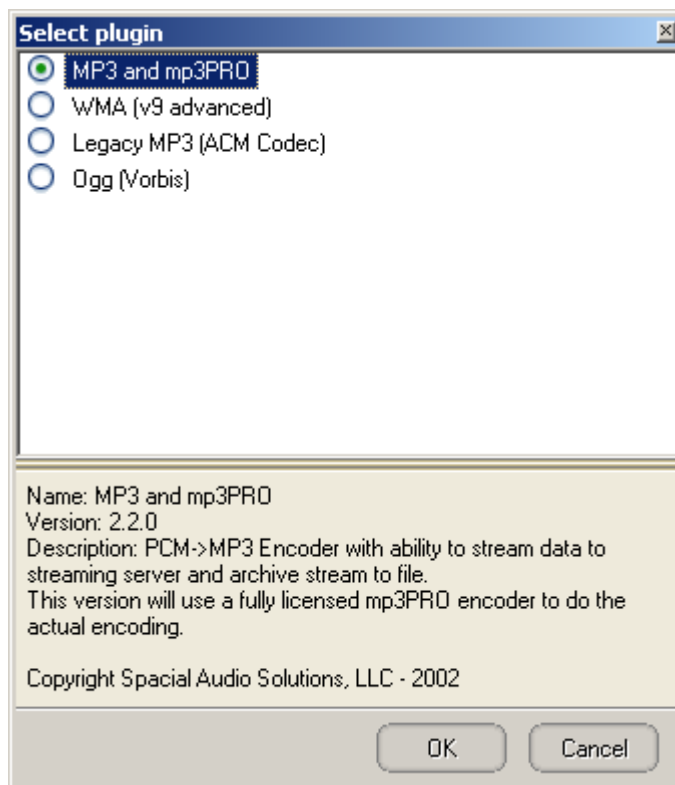


Fig. 3 SimpleCast Encoder Select



Click on the + (Add new encoder) and the window shown on the left appears.

Select „MP3 and mp3PRO“ and go click further on [OK].

Note:

At this step the format of the stream is set. Shoutcast basically supports MP3, mp3PRO and the acPlus format.

We recommend using the MP3 format because all popular players can receive MP3 livestreams by default without any further add-ons.

4.1.2 Converter

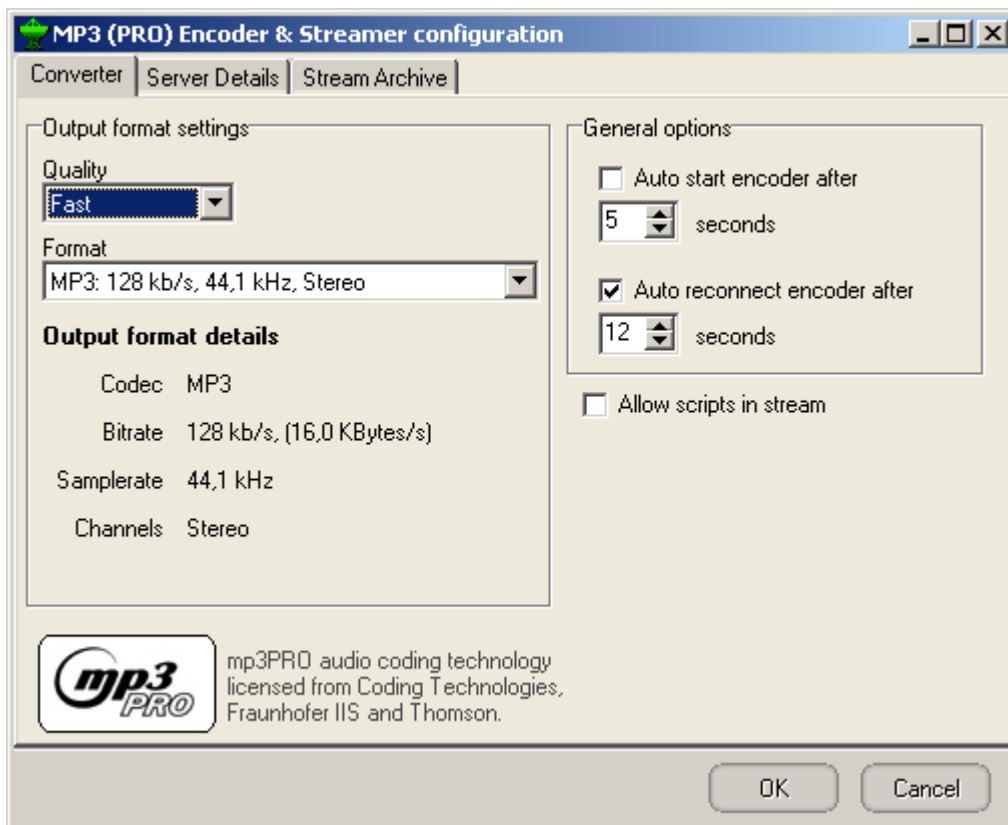


Fig. 4 SimpleCast Encoder Converter

Quality

Fast Resampling

Format

Enter here the MP3 bitrate (stream quality) you like to stream.

Please consider at this step to select at most this bitrate which you have booked. Exceeding the bitrate, your server is killed automatically by our control system.

General Options (Auto Start / Auto Reconnect / Allow Scripts)

These setting can be taken over as mentioned.

4.1.3 Server Details

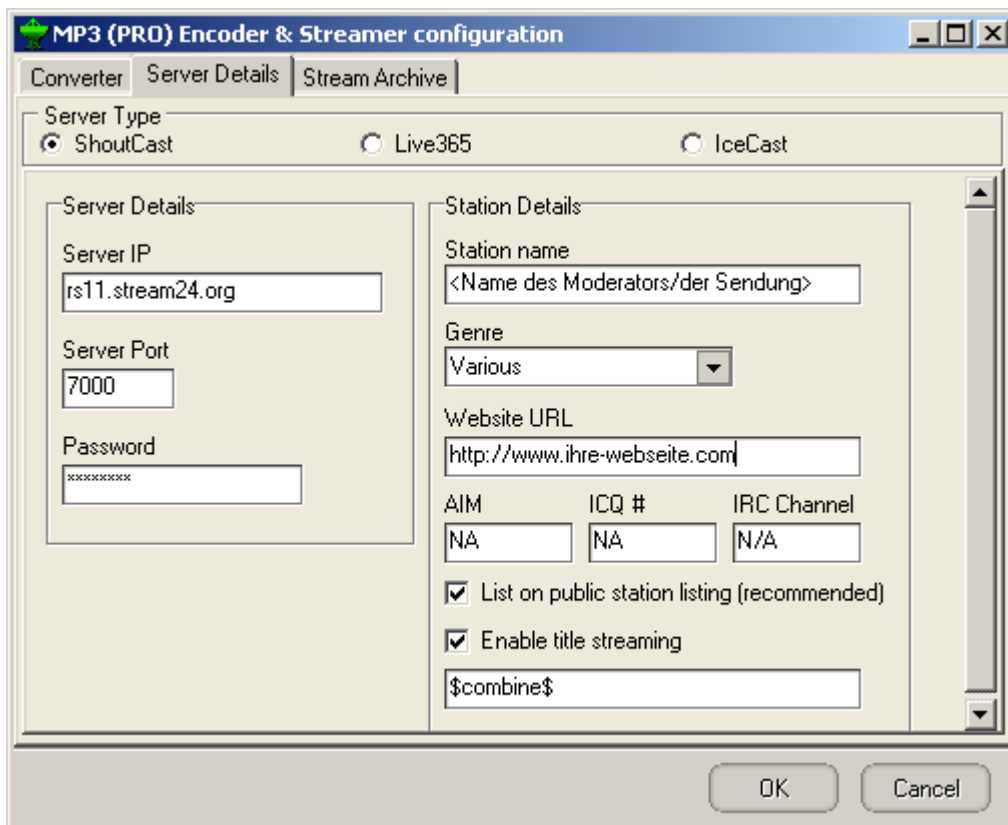


Fig. 5 SimpleCast Encoder Server Details

Please select „ShoutCast “ as **Server Type** and enter in the input fields for **Server IP**, **Server Port** and **Password** your individual stream data.

You find these data in the customer area under link “Server configuration”. There you can also set or change the Stream-Password anytime by yourself.

Station Name

Name of the DJ, title of the broadcast. (Example: „DJ Andy’s Rock night“)

Note: The name of your radio station you can fix in the customer area under “Server configuration”, see setting “Title format”.

Genre

Type of your music style, e. g. Rock/Pop, 80s or Oldies.

Website URL

The address of your station homepage, URL must begin with **http://**

AIM / ICQ / IRC

Details about AIM and IRC nick name or the ICQ number of the DJ (if applicable).

4.2 Icecast Server

4.2.1 Adding of MP3-encoder

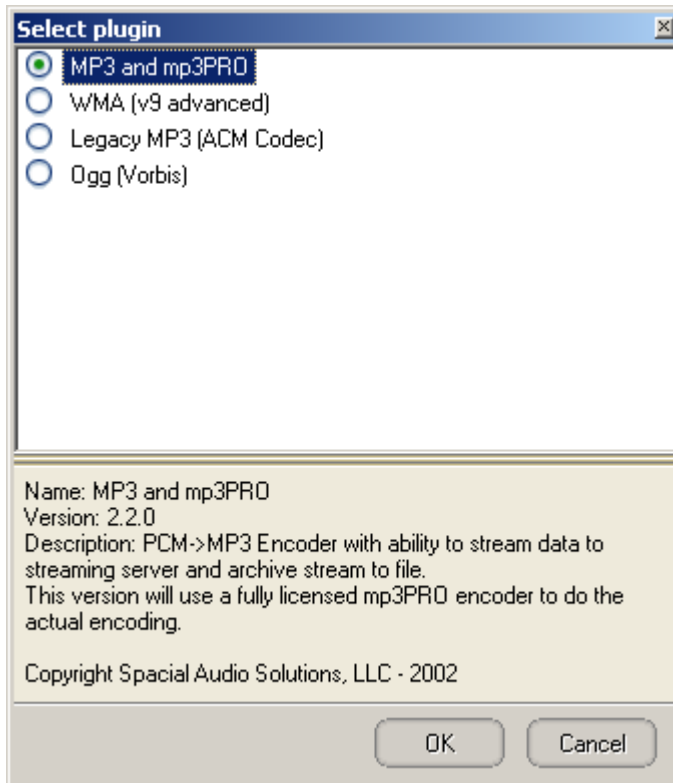


Fig. 6 SimpleCast Encoder Select



Click on the + (Add new encoder) and the window shown on the left appears.

Select „MP3 and mp3PRO“ and go click further on [OK].

Note:

At this step the format of the stream is set. Icecast basically supports MP3, mp3PRO, aacPlus and the OGG Vorbis format.

We recommend using the MP3 format because all popular players can receive MP3 livestreams by default without any further add-ons.

4.2.2 Converter

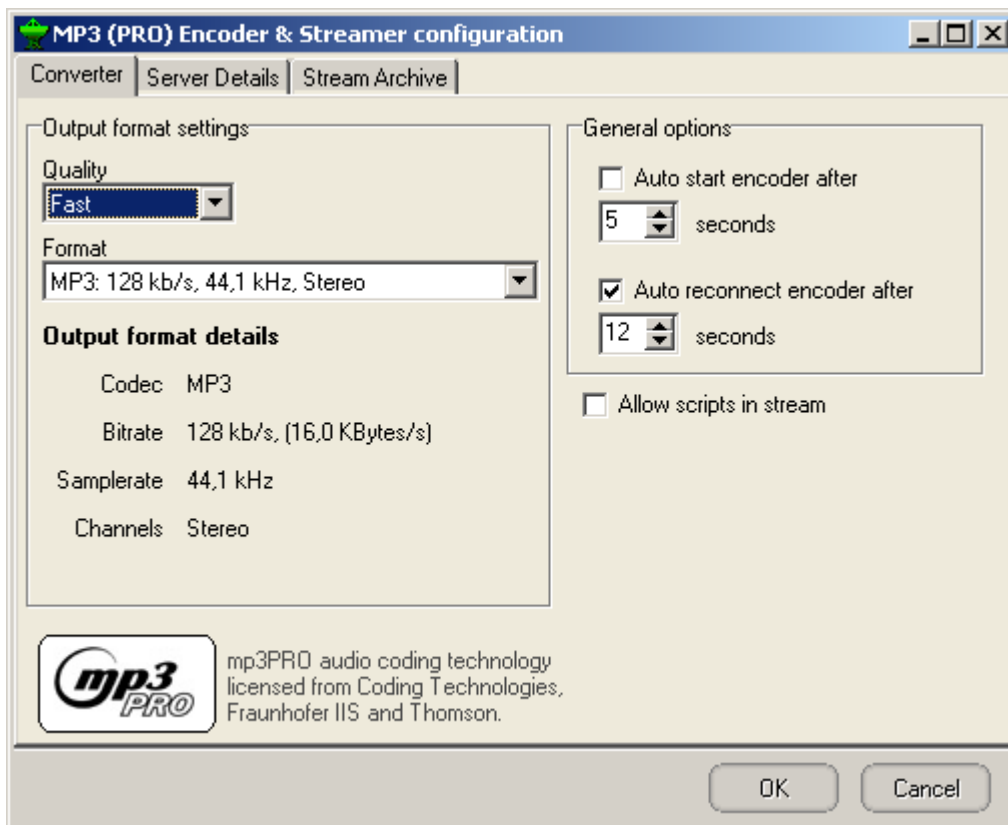


Fig. 7 SimpleCast Encoder Converter

Quality

Fast Resampling

Format

Enter here the MP3 bitrate (stream quality) you like to stream.

Please consider at this step to select at most this bitrate which you have booked. Exceeding the bitrate, your server is killed automatically by our control system.

General Options (Auto Start / Auto Reconnect / Allow Scripts)

These setting can be taken over as mentioned.

4.2.3 Server Details

Fig. 8 SimpleCast Encoder Server Details

On the top as “Server Type” please select **IceCast** and in the next line IceCast **2**.

Enter in the input fields for **Server IP**, **Server Port**, **Password** and **Mount** your individual stream data. You find these data in the customer area under link “Server Administration | Server configuration”.

Station Name

Name of the Radio station / DJ / title of the broadcast. (e.g.: DJ Andy’s Rock night)

Station description

You can leave this field empty.

Genre

Type of your music style, e. g. Rock/Pop, 80s or Oldies

Website URL

The address of your station homepage, URL must begin with **http://**

4.3 Windows Media Server

4.3.1 Adding WMA-encoder

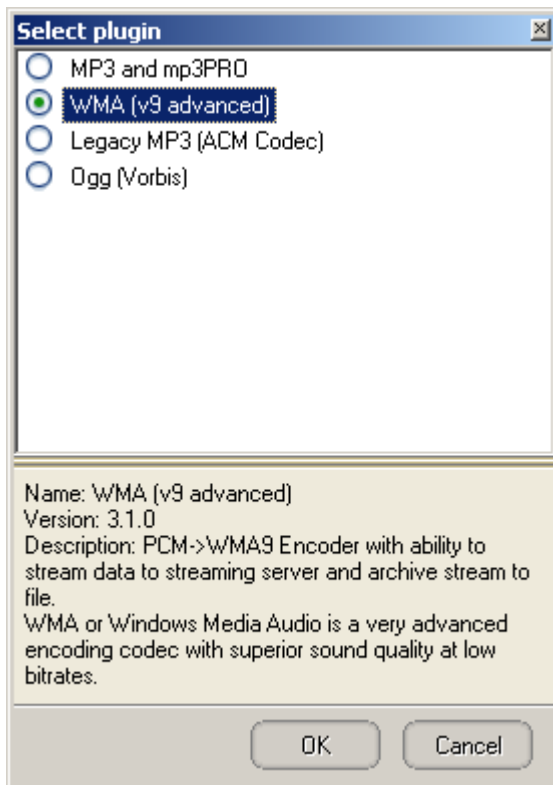


Fig. 9 SimpleCast Encoder Select



Click on the + (Add new encoder) and the window shown on the left appears.

Please select “WMA (v9 advanced)” and go click further on [OK].

Note:

At this step the format of the stream is set. Windows Media supports only the WMA format.

4.3.2 Profile

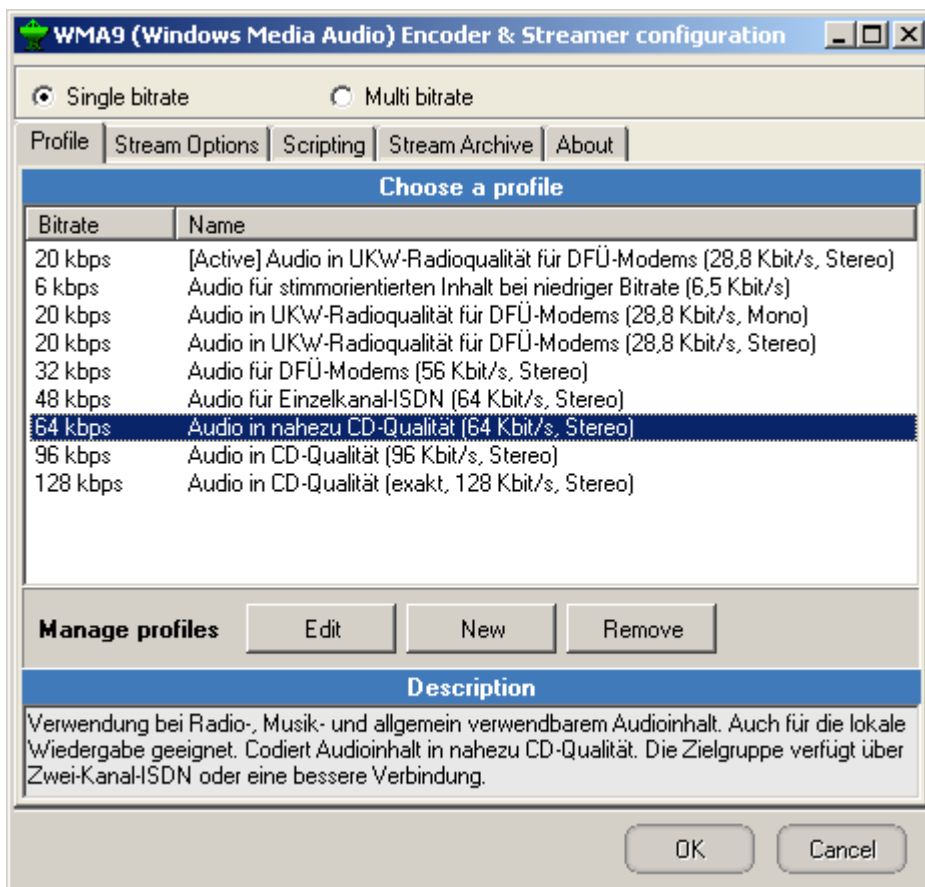


Fig. 10 SimpleCast WMA9 Encoder Profile

Select **Single Bitrate** on the top and in the register **Profile** choose a bitrate profile.

Note: Basically the bitrate may not exceed the bitrate ordered with us. There's a bitrate limitation set on the stream server. If the streaming bitrate is too high the server stops to deliver the stream to the clients without showing any respective error messages on the encoder or in client's player.

4.3.3 Stream Options

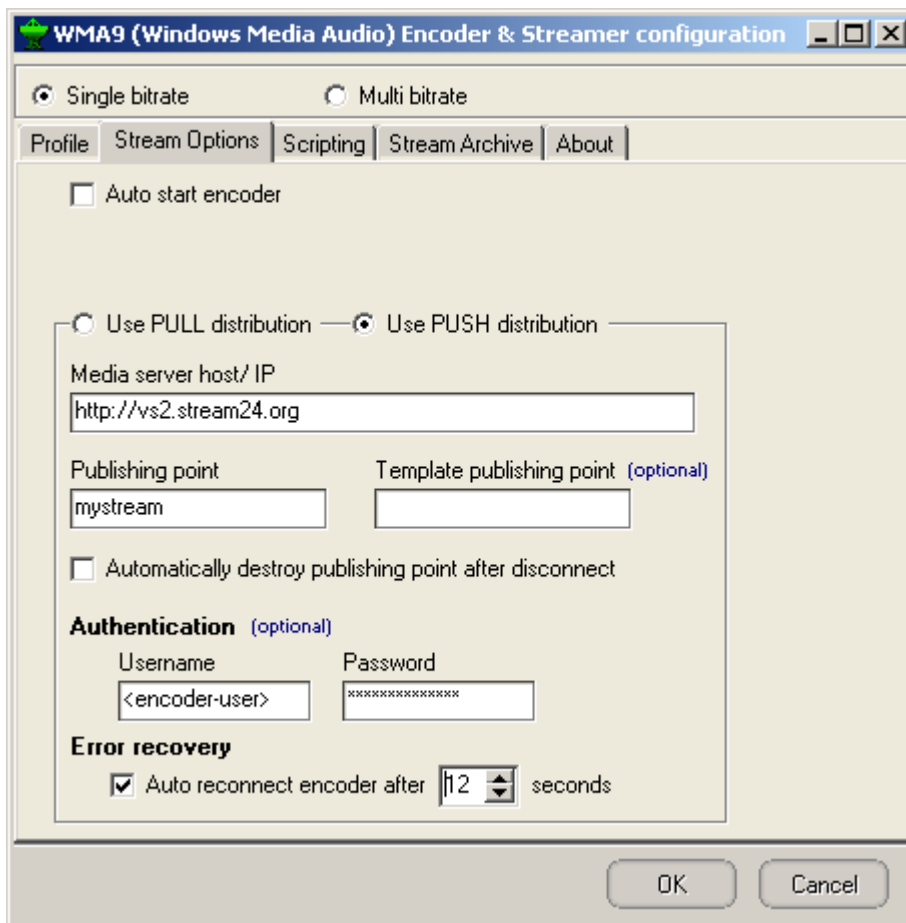


Fig. 11 SimpleCast WMA9 Encoder Streams Options

Please select the distribution method **Use PUSH distribution**. PUSH means that the data are sent from local encoder to server. Using the PULL method the server connects to the local encoder over your IP and given port number.

For **Media server host/IP** enter your Server Address (Host), for **Publishing Point** the name we setup for you.

Enter in the fields **Authentication Username** and **Password** your encoder data and close the configuration with clock on [OK].

Your will find your individual data in the customer area under link "Server Administration | Server configuration".

5. Configuration – Select soundcard device

Go back to the SimpleCast main module and click on the [Config] button

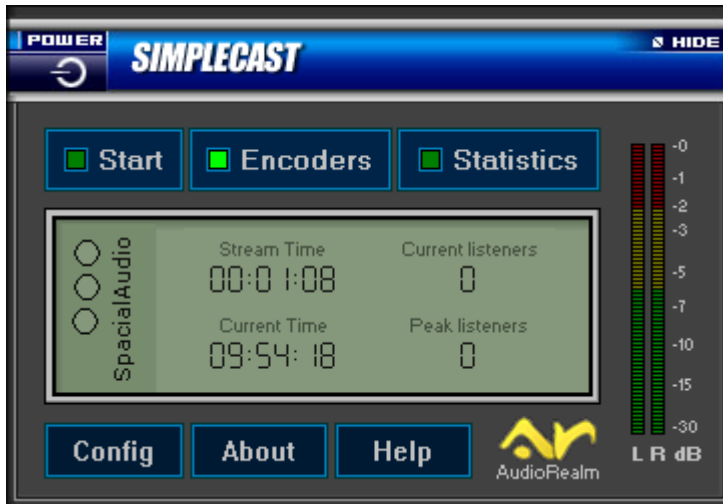


Fig. 12 SimpleCast Start

and you will get the following window:

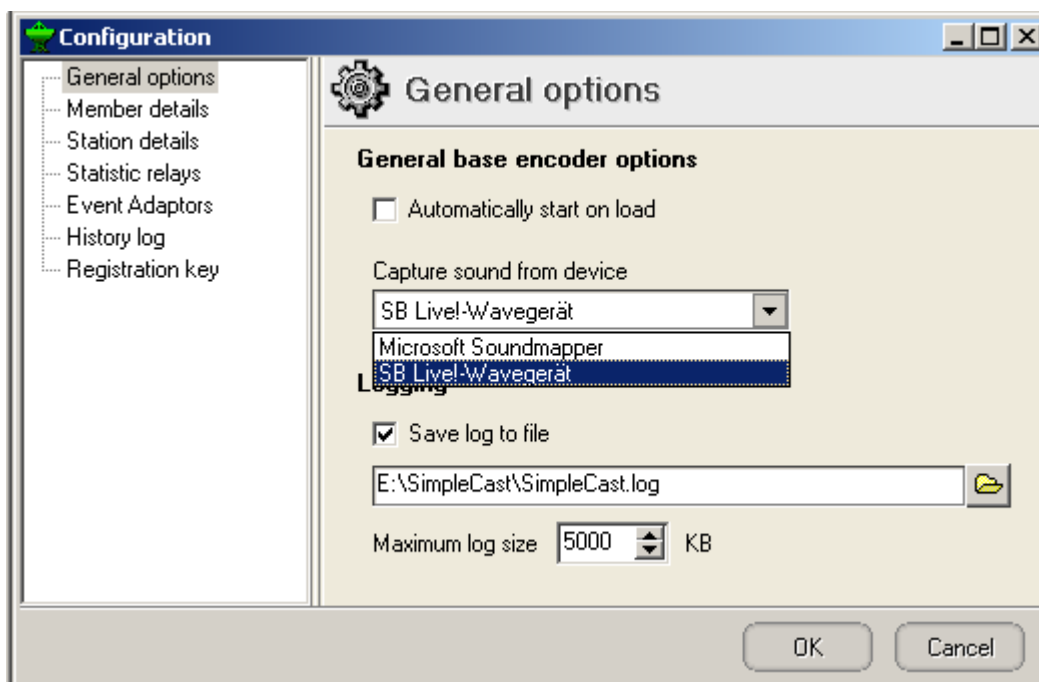


Fig. 13 SimpleCast General options

Select „General options” on the left and in the middle for „Capture sound from device“ this soundcard device where the audio signal for your broadcast should be taken from.

Close the configuration with a click on [OK].

6. Start encoder and broadcast

Put an audio signal to the line-in input of your soundcard and start the SimpleCast service by click on [Start].

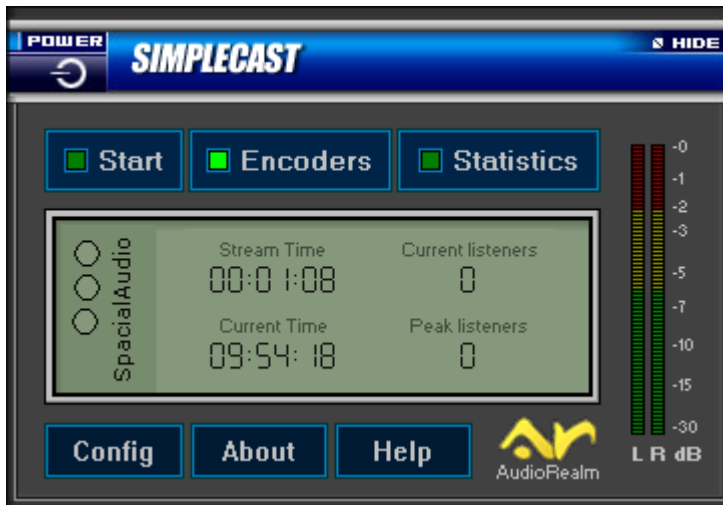


Fig. 14 SimpleCast Start

Just click on the Play-Button to start the encoder:

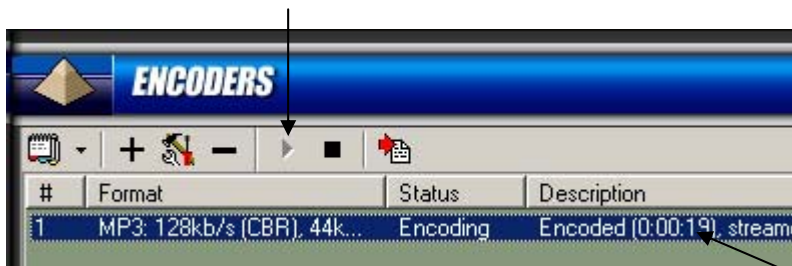


Fig. 15 SimpleCast Encoder Start

On successful connection to the stream server you will see how the time and bytes counter starts to run.

You get the error message:

- „Invalid server password“ (Shoutcast)
- „Invalid password“ (Icecast)
- “Push error. Access denied“ (Windows Media)

if you have typed a wrong password before.

Note: At the same time only one DJ can broadcast and be on the Air. If the stream server is busy, no other can connect to.

Further you can read on our main page or inside the customer area how to create player links to integrate them as tune-in links on your website.

That's all! We wish you success and a lot of fun and don't hang the head if everything doesn't work perfectly on first go...